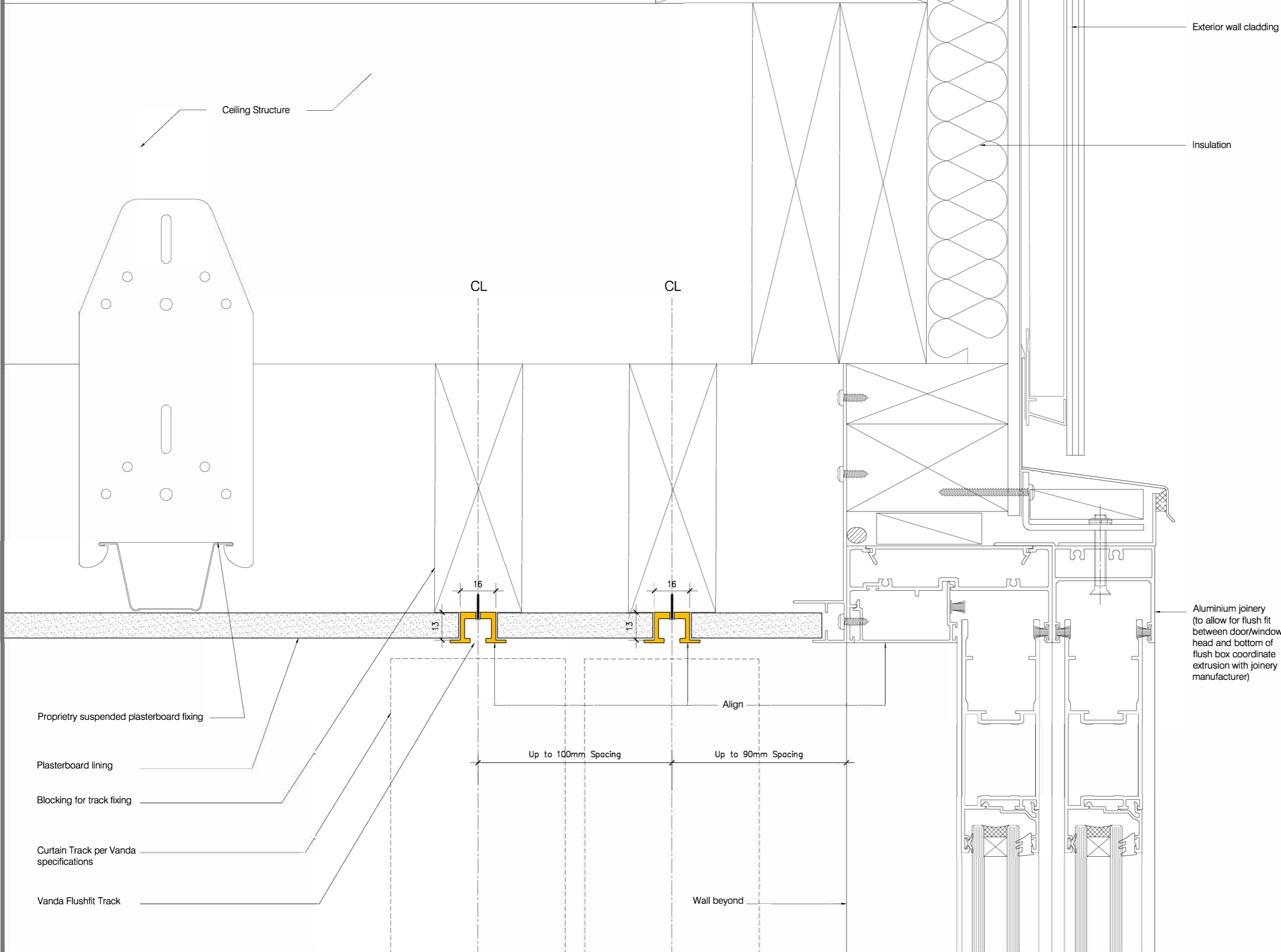


VANDA FLUSHFIT TRACK DOUBLE SYSTEM
Sample Installation Detail

Product Code Ref :

VA-FF-0002



Exterior wall cladding

Insulation

Aluminium joinery
(to allow for flush fit
between door/window
head and bottom of
flush box coordinate
extrusion with joinery
manufacturer)

PRODUCT :

Vanda Flush Fit Track Double
System VA-FF-0002

DESCRIPTION :

The Flushfit aluminium track is designed flush to the ceiling with a minimal flange.

MATERIAL :

Powder coated aluminium in standard Vanda White or any Dulux powdercoat colour.

NOTES :

Vanda suggests the distances vary between 50-90mm. However the above measurements depend on the curtain heading being specified. Ensure there is space for window/door handles.

For Double Flushfit installations with Bends Set - track centres to 95mm.

DISCLAIMER:

Note that the architectural detail is shown for reference only. All architectural details shown shall not be used for construction, and shall be drawn by an architect according to the specific building project and application. Drawing intent shows the possible placement of Vanda products within a building context.

1:2 Scale (A3)

