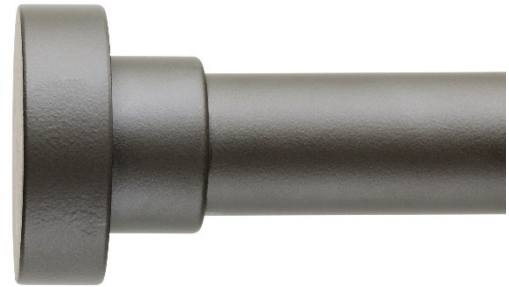


25mm Podium



Dimensions:

Length - 20mm

Full Depth - 48mm

Top to Rod - 12mm

Length: refers to the distance from the cut end of the rod to the furthest point of the finial.

Full Depth: refers to the distance between the widest points of the finial.

Top-to-rod: Refers to the distance from the top outside edge of the rod to the top point of the finial.

NB: Finial lengths have been calculated on the basis of the rod sitting 10mm into the finial head; this can vary depending on the rod finish